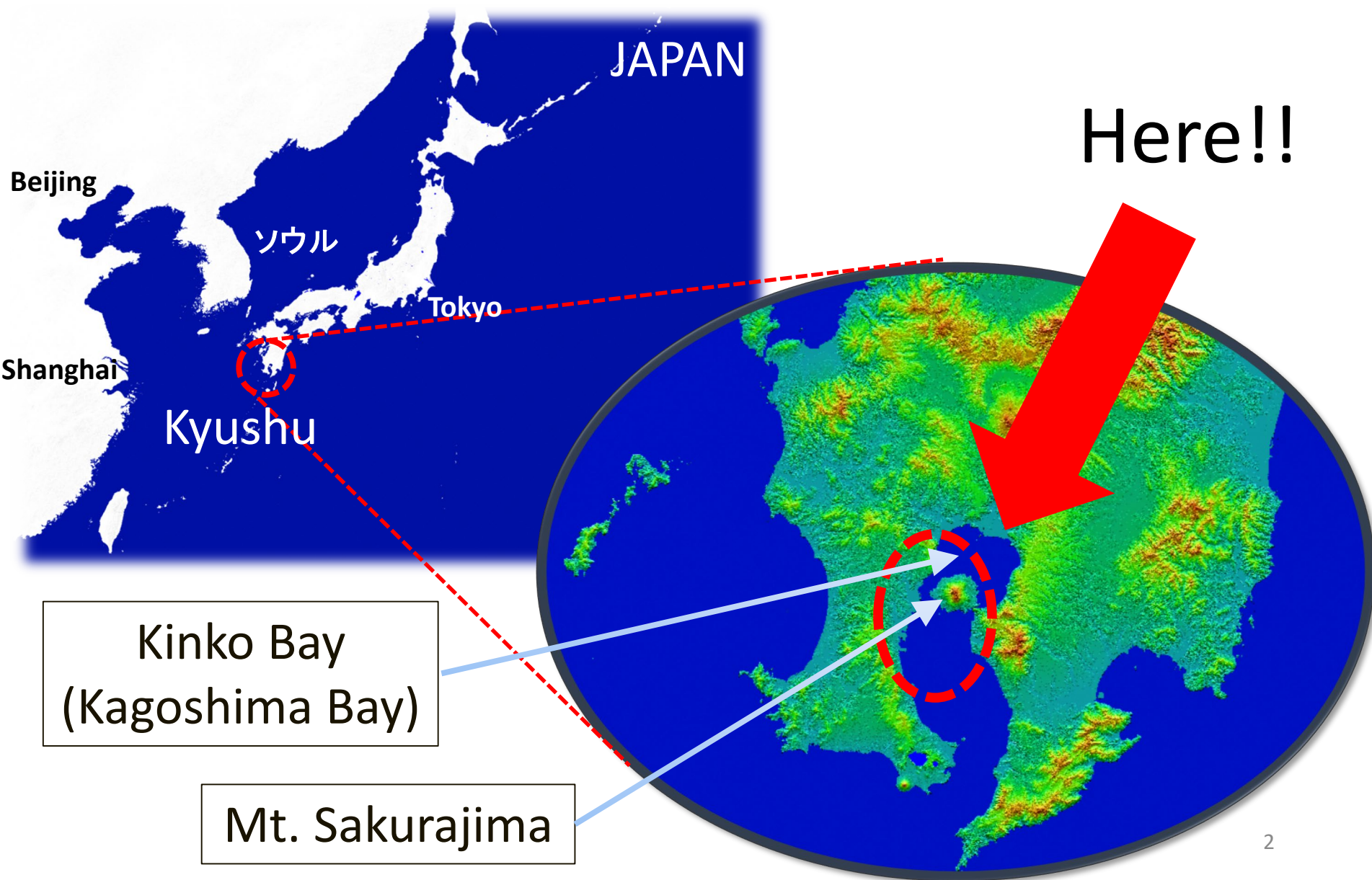


# Sustainable tourism in Kagoshima City which coexists with an active volcano, Sakurajima





**Kagoshima City is located in the center of Kagoshima prefecture on the Southern tip of Kyushu island**



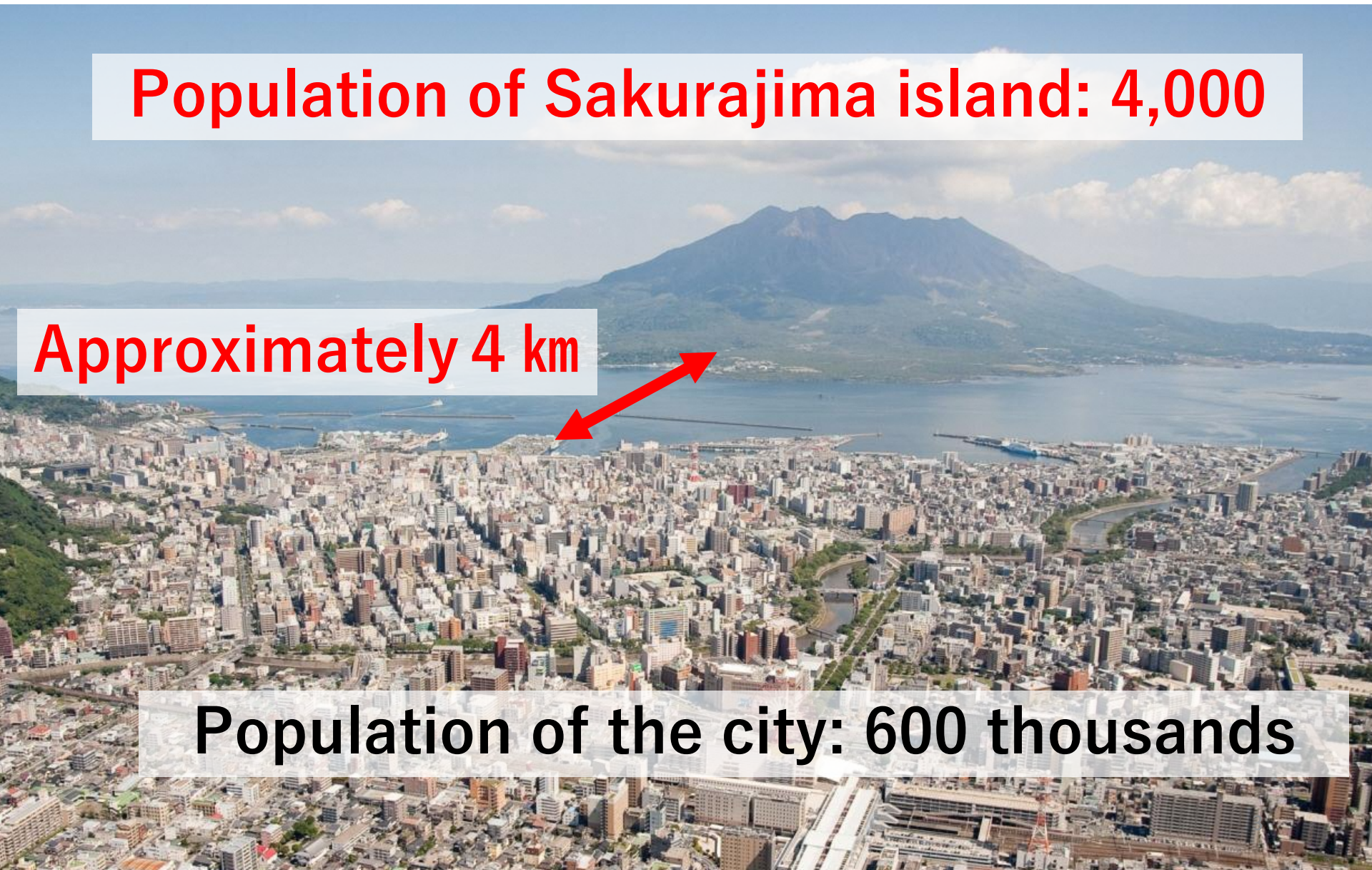


**The active volcano Sakurajima, home to 4,000 people,  
is located only 4 km away from the city center**

**Population of Sakurajima island: 4,000**

**Approximately 4 km**

**Population of the city: 600 thousands**





**It takes 15 minutes to get to Sakurajima by  
24-hour operational Sakurajima ferry.**





# 90% of foreign tourists in Kagoshima visit Sakurajima





**This active volcano erupts 1,000 times  
a year at most.**





he alluvial fans with good drainage are blessed with plenty of sunlight, therefore it's an ideal place for citrus cultivation.



- Alluvial fan
- Good drainage



# The world's smallest mandarin oranges!

## December is the best season





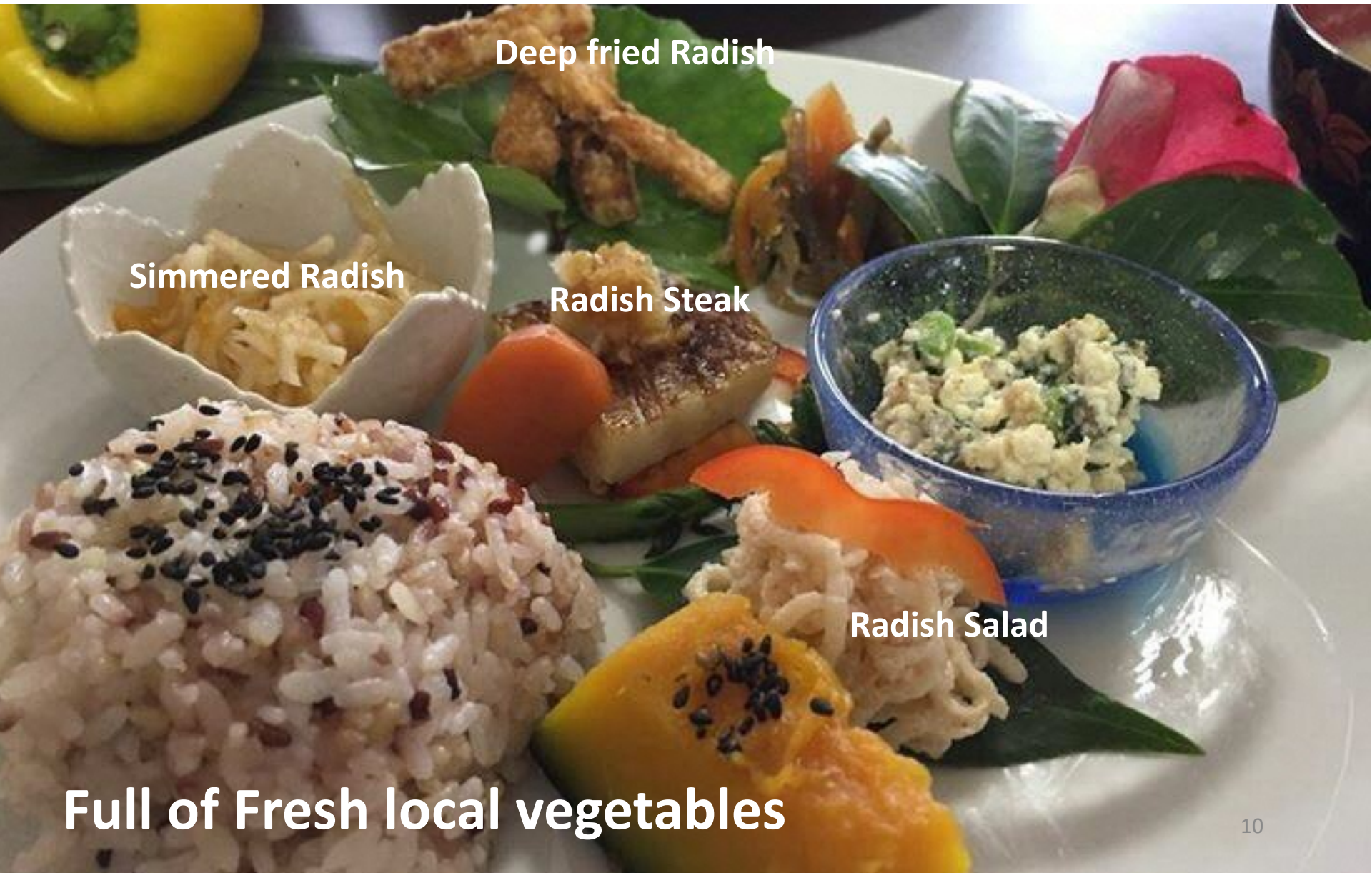
# The world's heaviest Sakurajima daikon radish!

## February is the best season





# Sakurajima daikon radish can be enjoyed from local farm



Deep fried Radish

Simmered Radish

Radish Steak

Radish Salad

Full of Fresh local vegetables



# Go around Sakurajima island(36km) on a rental bike



## Which one do you like?

Easy Ride with Electric Assistance

### E-bike



Comfortable for long distance

### Cross-bike





# The beautiful contrast between the black pines and the lava field





# Explore Kinko Bay by kayak





# Volcanic warnings every morning

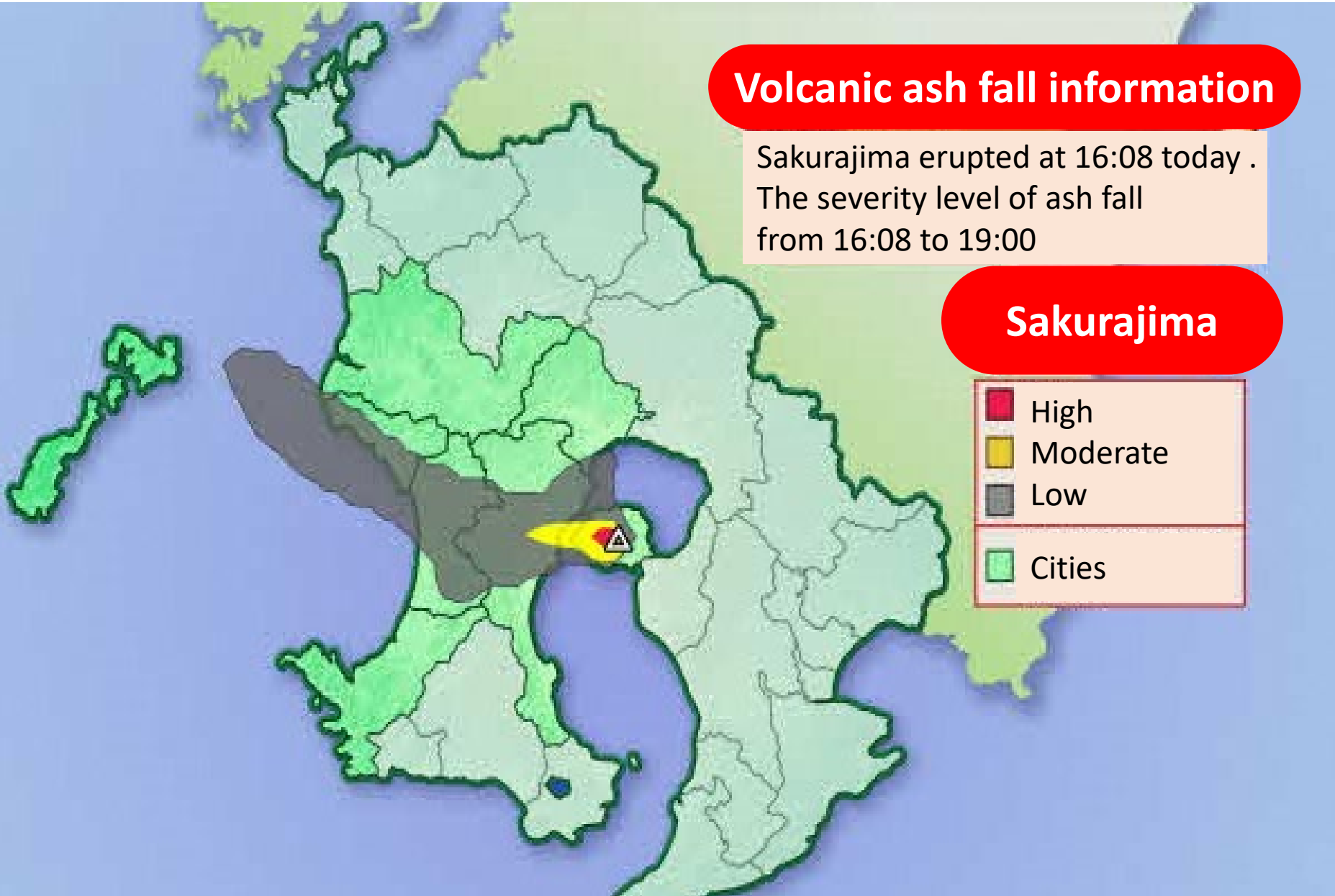
(The forecast of wind direction above Sakurajima)

## Volcanic ash fall information

Sakurajima erupted at 16:08 today .  
The severity level of ash fall  
from 16:08 to 19:00

## Sakurajima

- High
- Moderate
- Low
- Cities





# Volcanic ash collecting point

## A beautiful city depends on the local communities



This yellow bag is for collecting volcanic ash



# Greening on the city tram lanes for the environment



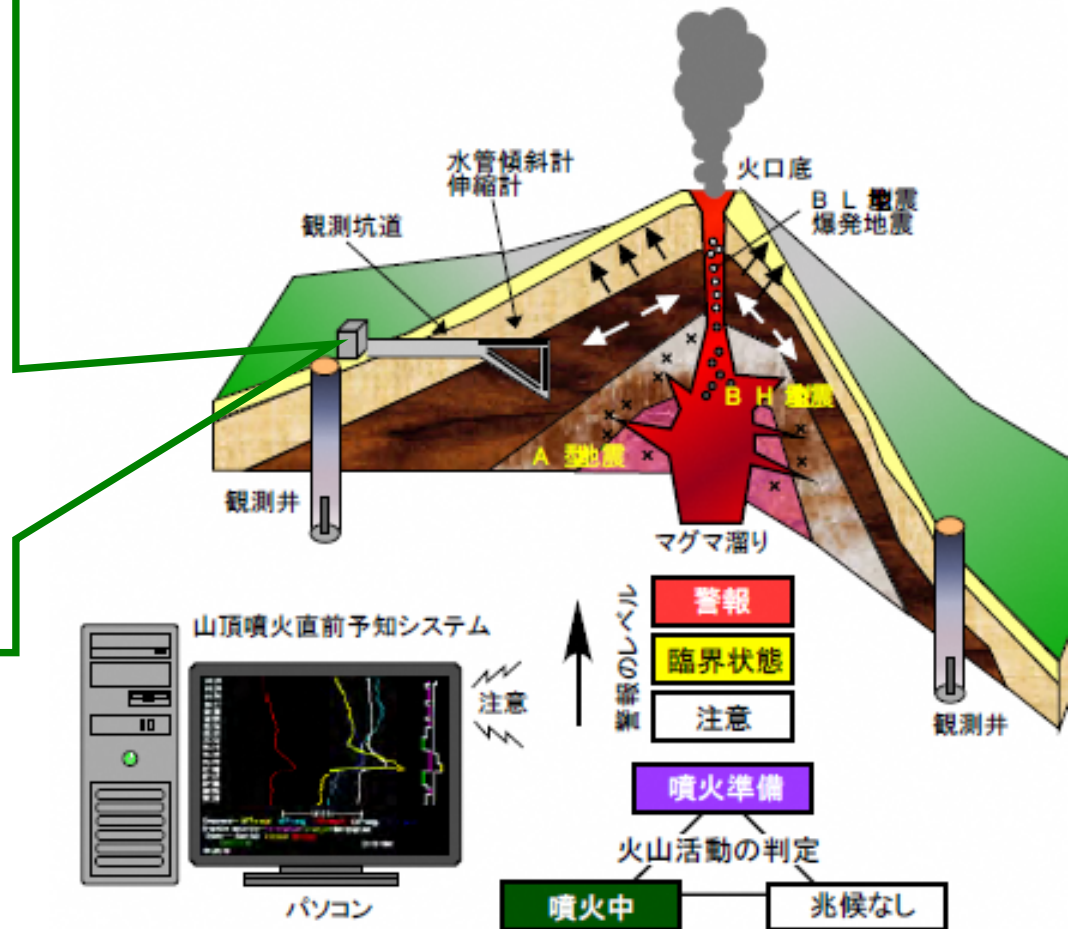
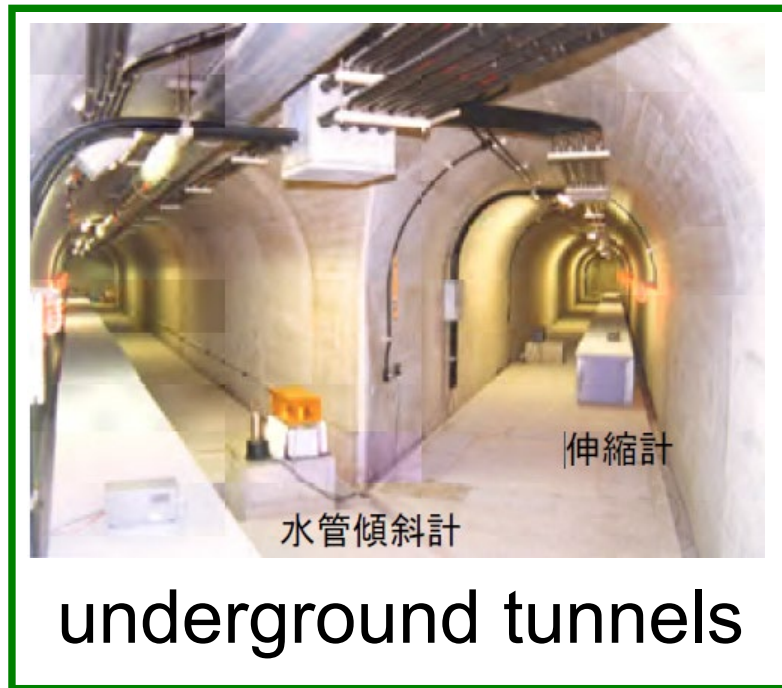


**Special blocks containing shirasu; pumiceous sediments, provide the base for promoting the growth of lawns that mitigate the heat island effect**





# The world class monitoring system



For accurate information, monitoring is conducted in three tunnels.



# Emergency drills has been held for over 50 years



Foreign residents participate in evacuation drills as international tourists



# Sustainable tourism utilizing unique characteristics

