

For Earth, For Life
Kubota



ON YOUR SIDE

KUBOTA Drainage Pump Vehicle

13th Asian-Pacific City Summit – Oct. 2021

KUBOTA Corporation

Introduction of KUBOTA Corporation

Company Overview

as of December 31, 2020



Employees



Consolidated employees

41,605

Revenue



Revenue

¥1,853.2 billion

Overseas revenue ratio



Overseas revenue ratio

About 68%

Main Products

Farm & Industrial Machinery

Agricultural Machinery



Construction Machinery



Water & Environment

Ductile Iron Pipe



Pumps



Valves



Johkasou



Membrane(MBR)



Plant Engineering



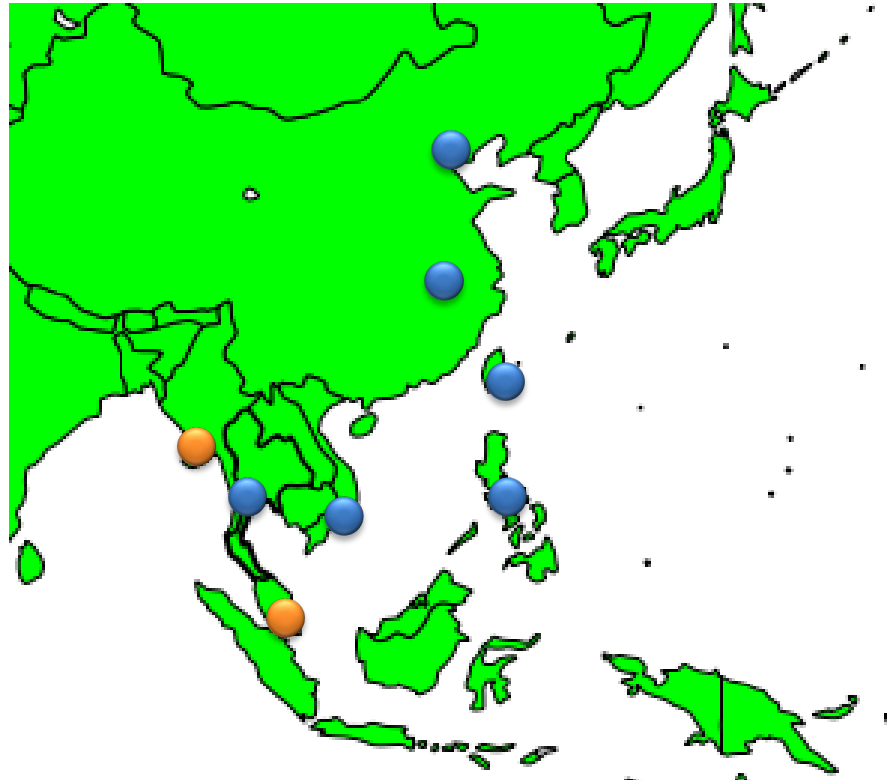
Global Network in Asia

KUBOTA
Yangon
Branch

KUBOTA KASUI
THAILAND
CO., LTD.

KUBOTA
Malaysia
Branch

KUBOTA KASUI
VIETNAM
CO., LTD.



WUZHOU FUJIKASUI
ENGINEERING
CO., LTD.

KUBOTA PUMP
(ANHUI) Co., Ltd.

KUBOTA KASUI
TAIWAN
CO., LTD.

KUBOTA KASUI
PHILIPPINES
CORPORATION

- Office/Branch
- Group Company

Water Infrastructure Project in Asia(Kubota Group)

For Earth, For Life
Kubota

Water Supply

Myanmar

Greater Yangon Water Supply
Improvement Project
(Phase1)



Cambodia

The Project for Expansion of
Phum Prek Water Treatment
Plant(Phnom Penh)



Sewage

Cambodia

The Project for Sewerage
System Development in
Phnom Penh



Singapore

Changi Water Reclamation
Project



Flood Protection

Cambodia

The Project for Flood Protection
and Drainage Improvement in the
Municipality of Phnom Penh



Philippine

Metro Manila Flood Control
Project-West of Mangahan

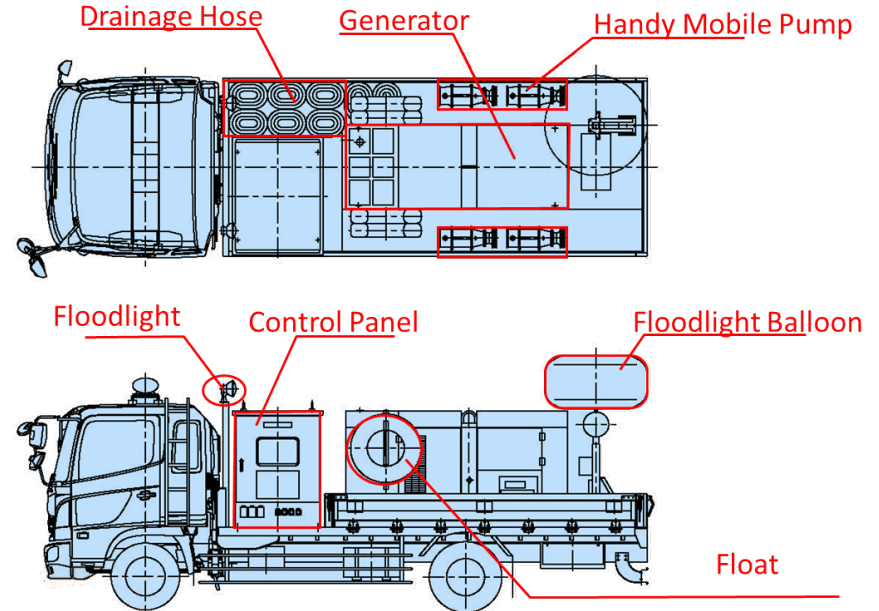


Kubota Drainage Pump Vehicle

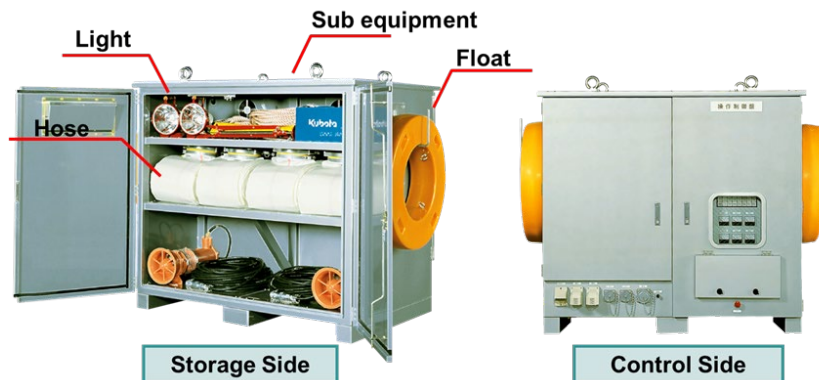
KUBOTA Drainage Pump Vehicle

Specification

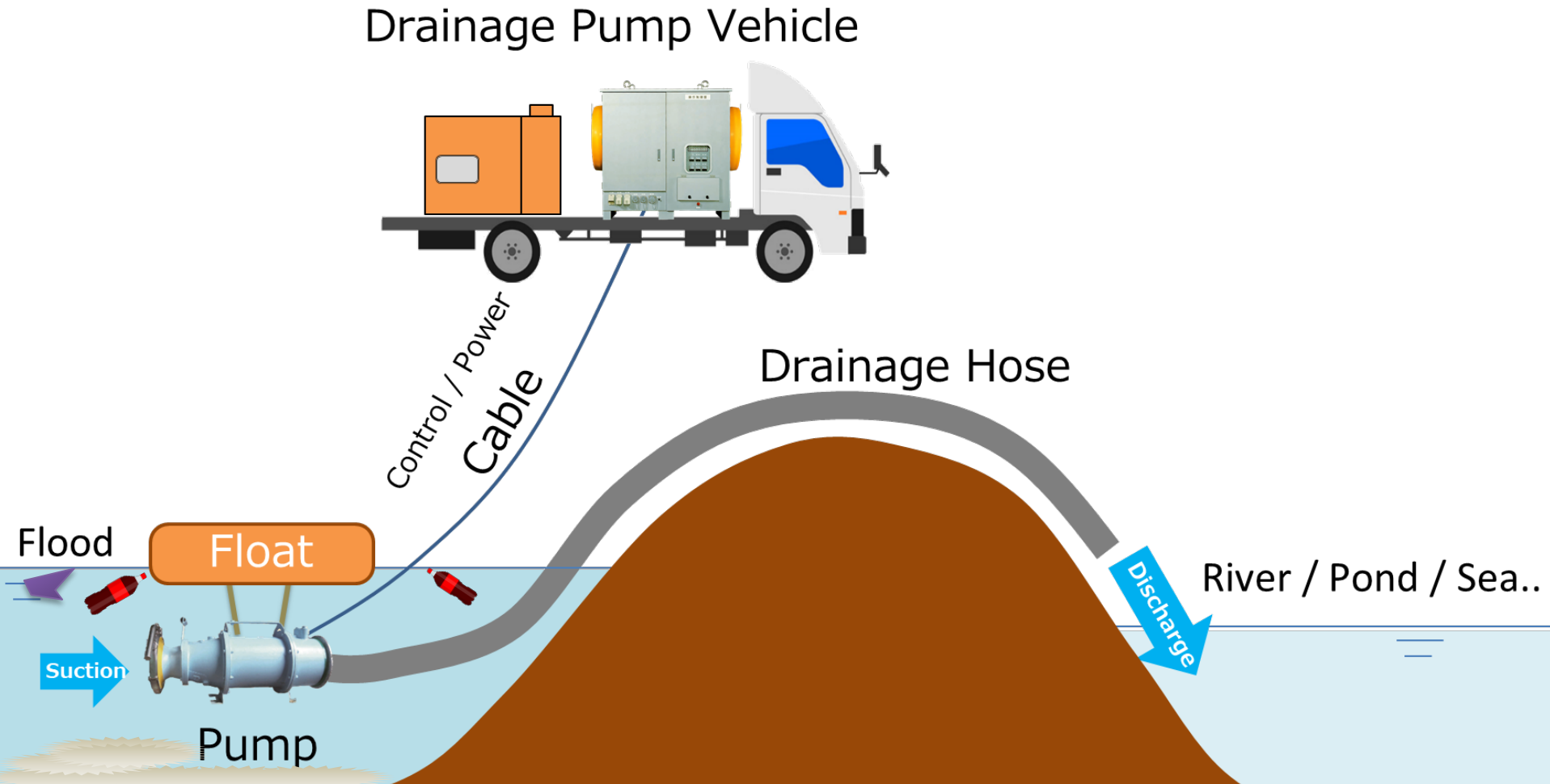
Capacity : 5m³/min – 60m³/min
Total Head : 10m – 20m



Drainage Pump Vehicle

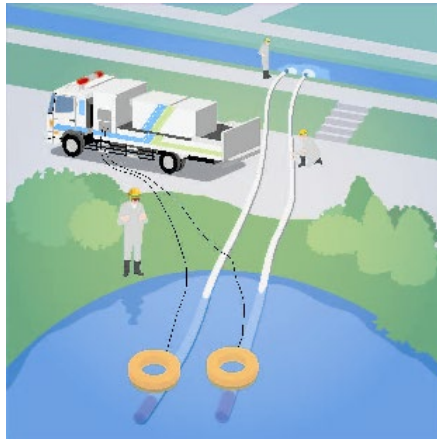


What is the Drainage Pump Vehicle



Application of Drainage Pump Vehicle

Drainage of flooded water at inland



Drainage of flooded water at under-path



Drainage of flooded water at basement



Backup pumping station



Drainage Pump Vehicle can be used at anywhere. (Drainage destination such as canal, river, sea is required)

Emergency flood recovery

Feature of Drainage Pump Vehicle

Compact and Easy Handling



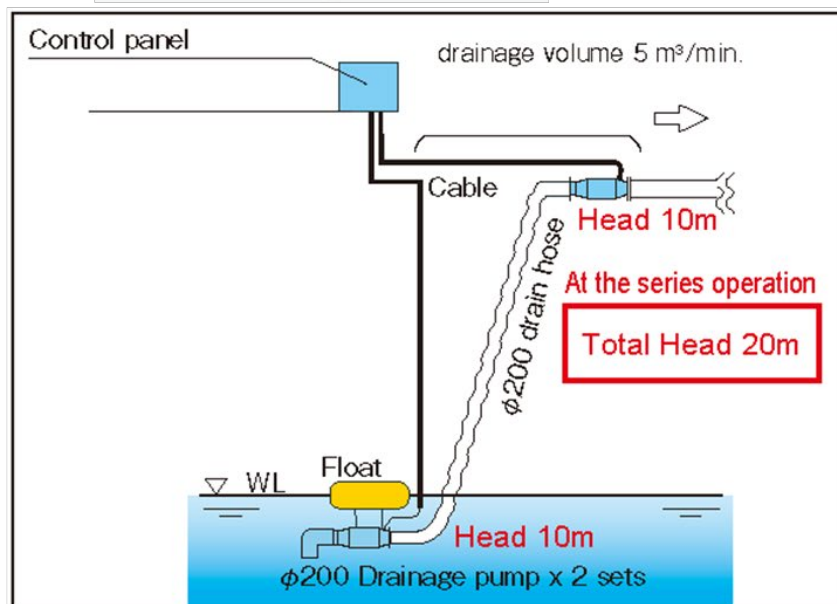
The weight is 32kg (Capacity 5m³/min)

Feature of Drainage Pump Vehicle

High Head Drainage



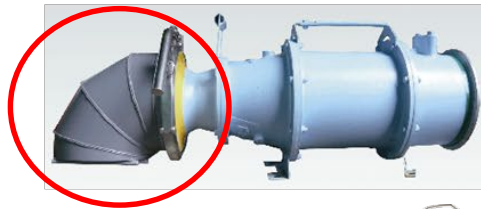
5m³ Type
($\phi 200 \times 5\text{m}^3/\text{min} \times 10\text{m} \times 12\text{kW}$)



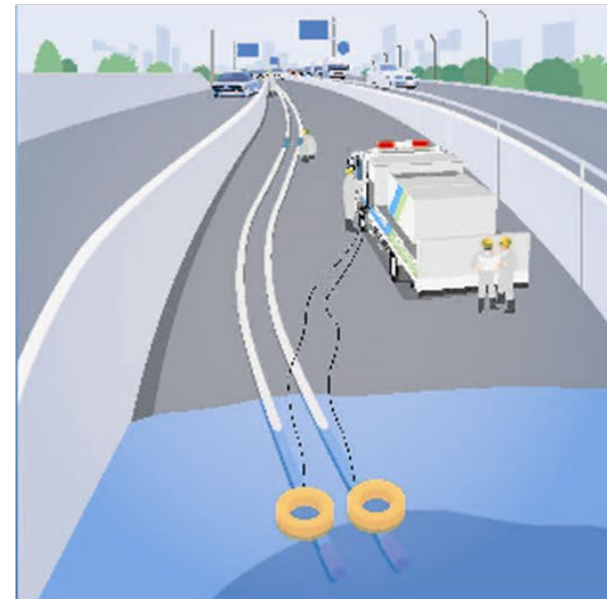
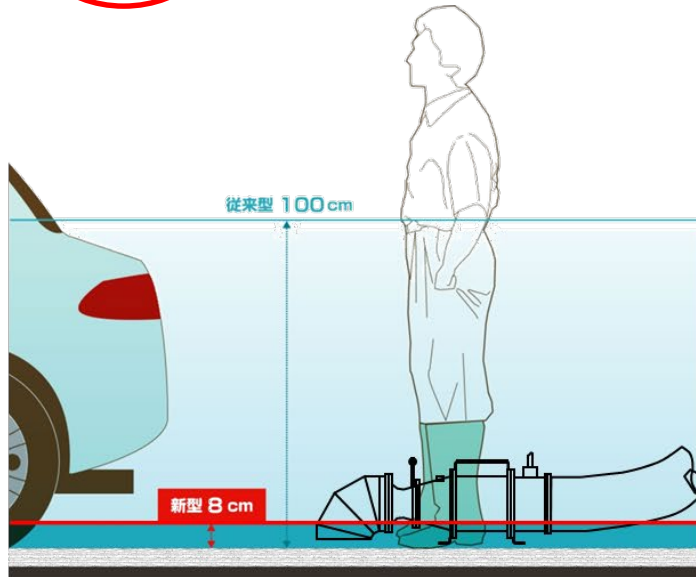
By connecting 2 pumps, able to pump up to 20m head.

Feature of Drainage Pump Vehicle

Low water level drainage



5m³Type
($\phi 200 \times 5\text{m}^3/\text{min} \times 10\text{m} \times 12\text{kW}$)



With attaching the option nozzle,
able to drain up to 8cm depth.

Feature of Drainage Pump Vehicle

- Rush to the site by **vehicle** equipped with a lightweight drainage pump.
- Shallow water level drainage.

Urgent recovery
from flood

- Adoption of **ultra-light weight pump**
- All equipment required for drainage work is stored in the vehicle
- All equipment can be installed **by human power** without special tools or crane

Surely / Easy
drainage system

- **Compact and simple equipment**

Measures with
limited personnel
and budget

Supply record of Drainage Pump Vehicles

For Earth, For Life
Kubota

Japan



Reference : MLIT Homepage



The Ministry of Land, Infrastructure, Transport and Tourism owns more than 350 drainage pump vehicles and uses them to recover from floods.

Supply record of Drainage Pump Vehicles

For Earth, For Life
Kubota

Indonesia



Supplied Year : 2005
Quantity : 11 Vehicles

Cambodia



Supplied Year : 2020
Quantity : 2 Vehicle

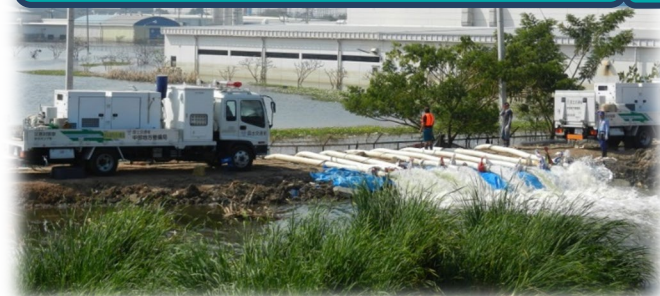
Thailand

10 numbers of Pump
Vehicles were dispatched
flood mitigation in 2011.

Supplied Year : 2014
Quantity : 10 Vehicles

Myanmar

Demonstration Project aided
by MLIT in Yangon(2020)





ON YOUR SIDE

Thank you for your attention.

For Earth, For Life
Kubota

予備スライド

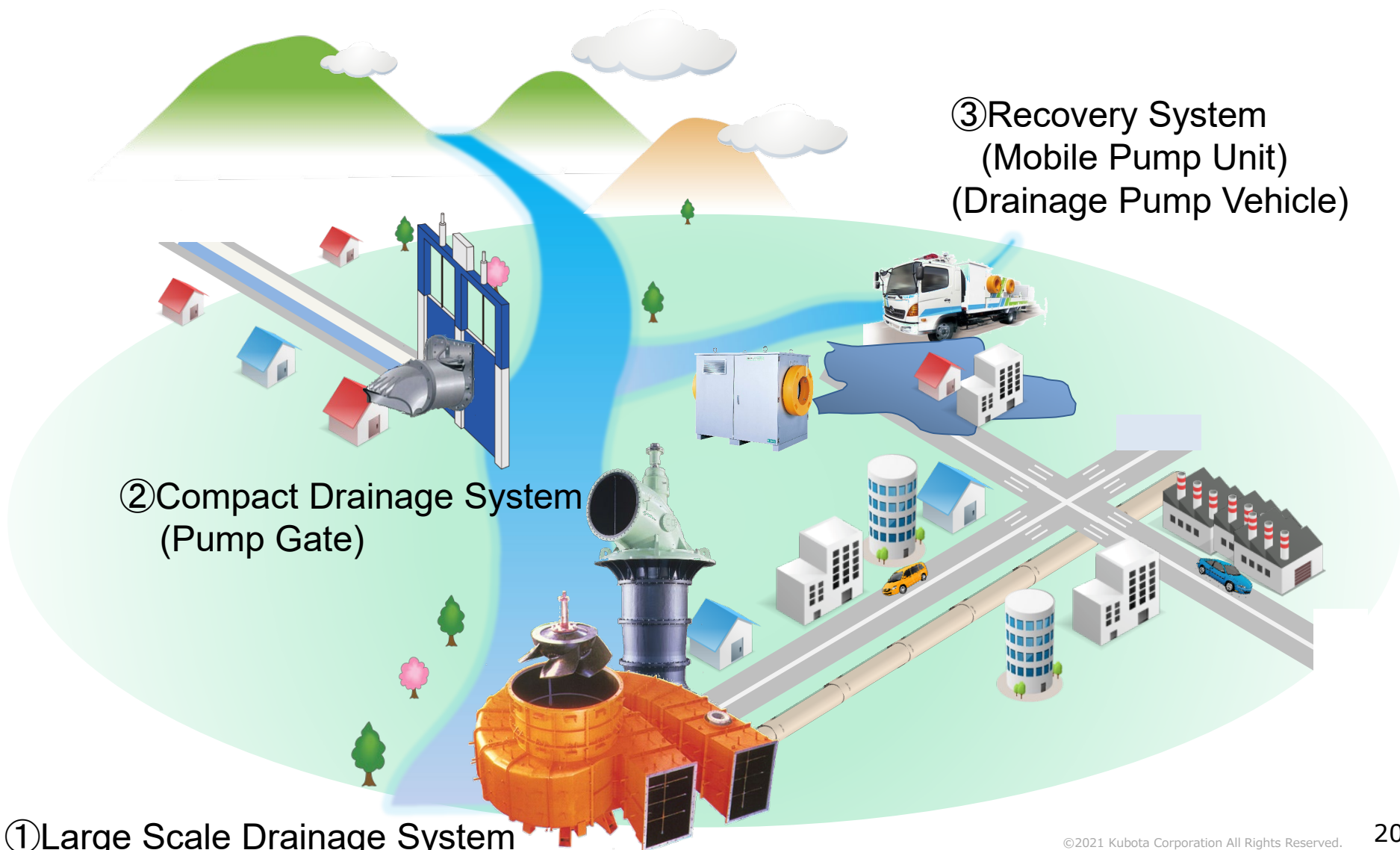
Pumps in Urban Drainage System

Pumps in Urban Drainage System

③ Recovery System
(Mobile Pump Unit)
(Drainage Pump Vehicle)

② Compact Drainage System
(Pump Gate)

① Large Scale Drainage System



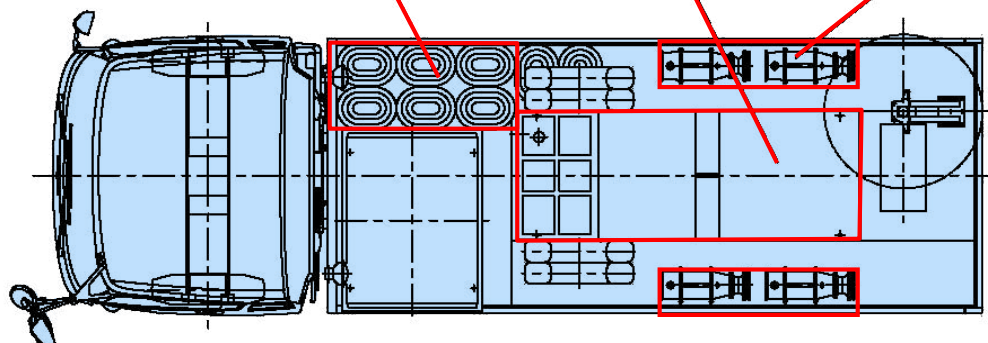
Component of Drainage Pump Vehicle



Drainage Hose

Generator

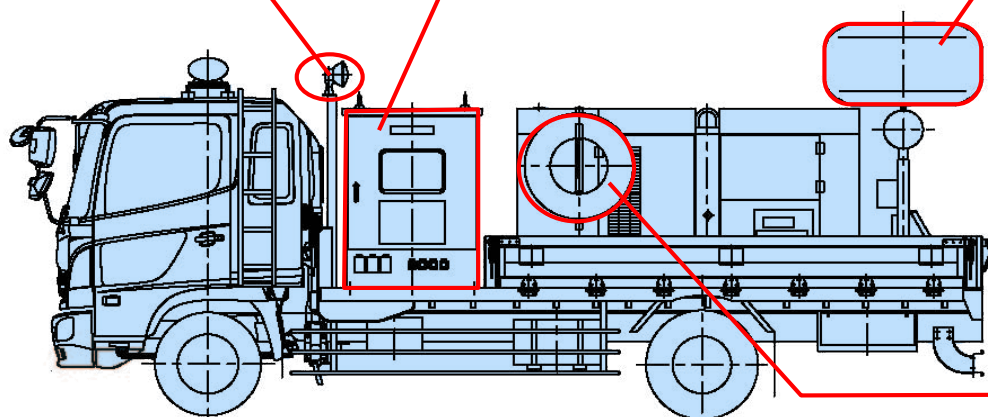
Handy Mobile Pump



Floodlight

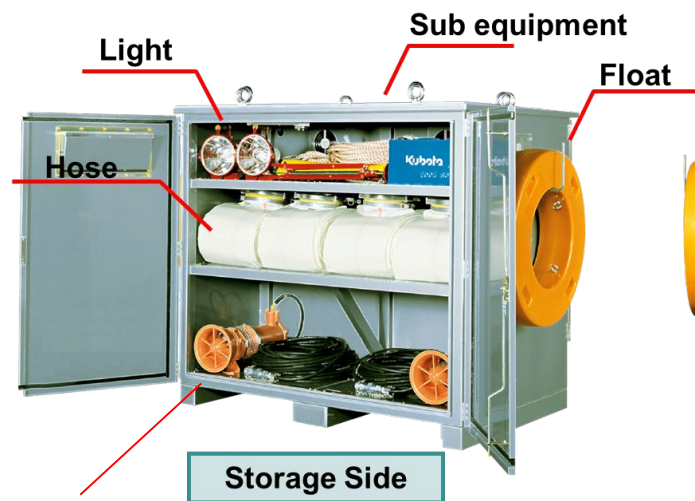
Control Panel

Floodlight Balloon



Float

KUBOTA Handy Mobile Pump Package



Handy Mobile Pump

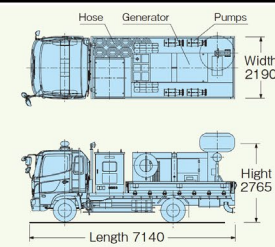
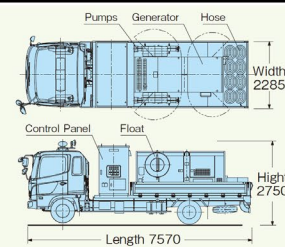
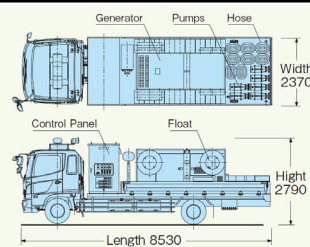
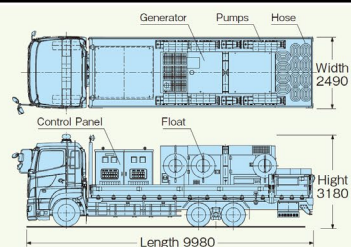


Capacity : 5m³/min or
10m³/min
Total Head : 10m – 20m



Lineup of Drainage Pump Vehicle

60m ³ /min	30m ³ /min	30m ³ /min	20m ³ /min
Capacity per pump 5.0m ³ /min × 12 sets	Capacity per pump 5.0m ³ /min × 6 sets	Capacity per pump 7.5m ³ /min × 4 sets	Capacity per pump 5.0m ³ /min × 4 sets
22 ton vehicle	11 ton vehicle	8 ton vehicle	8 ton vehicle
Generator 300kVA	Generator 125kVA	Generator 125kVA	Generator 100kVA



Feature of Drainage Pump Vehicle

3 type submersible pumps

Standard Model



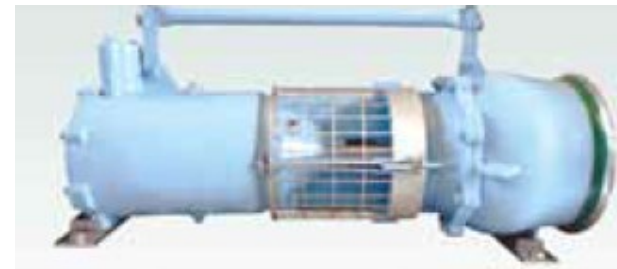
5m³/min, 10mH

High Capacity Model



7.5m³/min, 10mH

High Head Model



2.5m³/min, 20mH

It is possible to select the pump according to the flood situation in the area.

Corporate Information

