



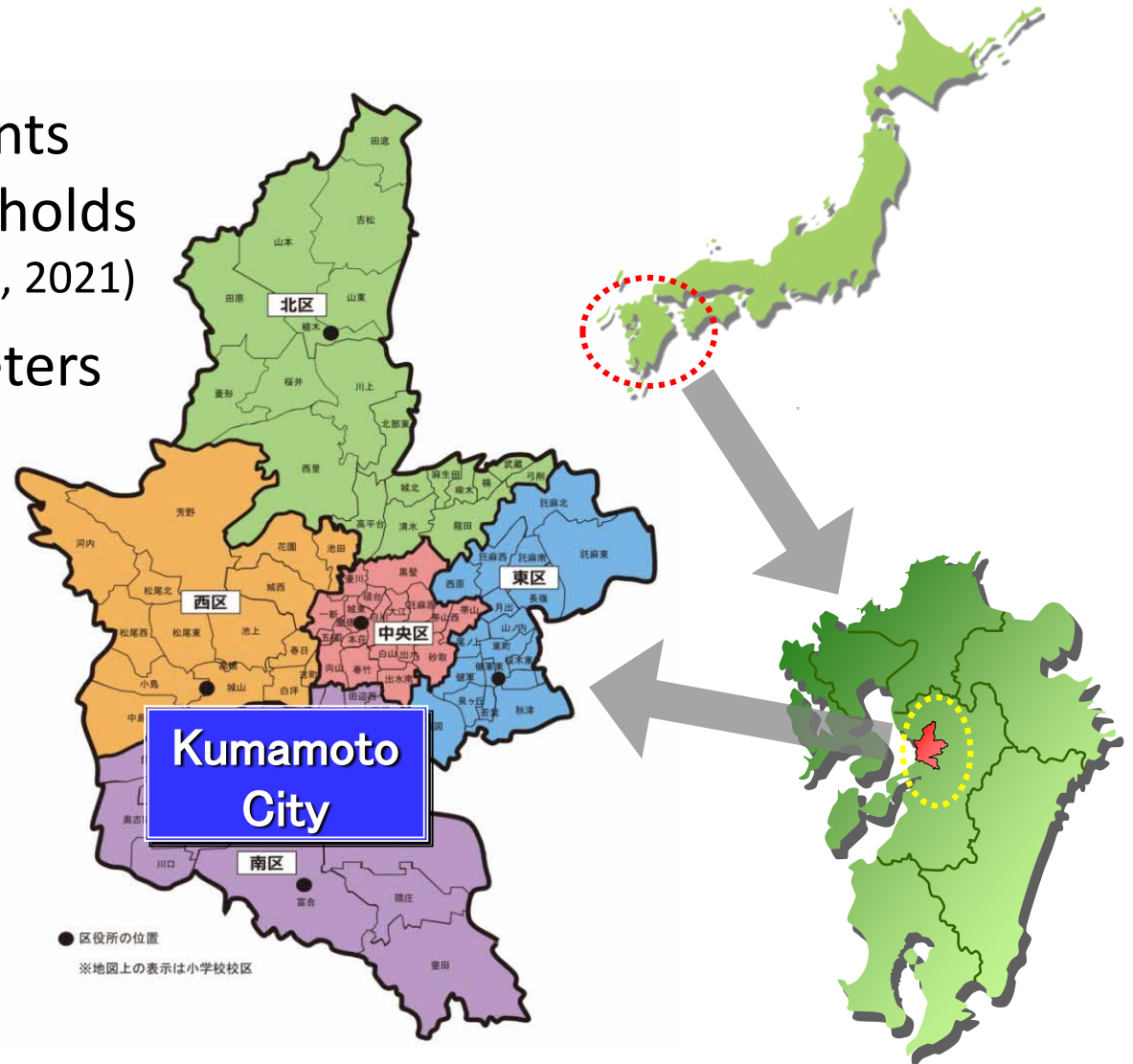
Realizing a Sustainable, Disaster-Resistant, Decarbonized Society



Mayor of Kumamoto
Kazufumi Onishi

Kumamoto City Overview:

- Population: 732,077 Residents
349,791 Households
(as of September 1st, 2021)
- Area: 390.32 Square Kilometers
- Population Density:
1,900 people/sq. km



The 2016 Kumamoto Earthquake

- Earthquakes of Magnitude 6.5 and 7.3, Respectively
- 430,000 Homes Lost Water
- 460,000 Homes Lost Power
- 180,000 Evacuees at the Peak



Recognizing the Importance
of Lifeline Service resilience

Partnered with Private Businesses to Start the
Regional Energy Project Amidst the Post-Earthquake
Recovery
(Lifeline Resilience Project)

Purpose

- Reducing Greenhouse Gas Emissions
- Strengthening Disaster Response (Energy Provision)

Efforts:

- ① Power Public Facilities Using Waste-to-Energy Power
- ② Install High-Capacity Electric Energy Storage
- ③ Ensure Electricity Provision at Shelters Using EVs

- Providing Energy to Public Facilities from Waste-to-Energy Plants
 - ➔ Reducing Greenhouse Gases and Cost of Electricity
- Based on the Cost Reduction, We Introduce Incentives for Citizens and Businesses to Use Energy Saving Devices



Electricity



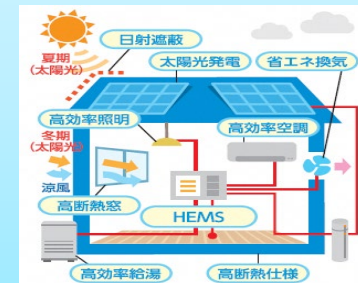
Electricity Cost
Reduction

Reduced by
\$163,000

Cost of
Electricity

Introducing Incentives for Citizens' & Business' Energy Conservation (1,000 Distributed Annually)

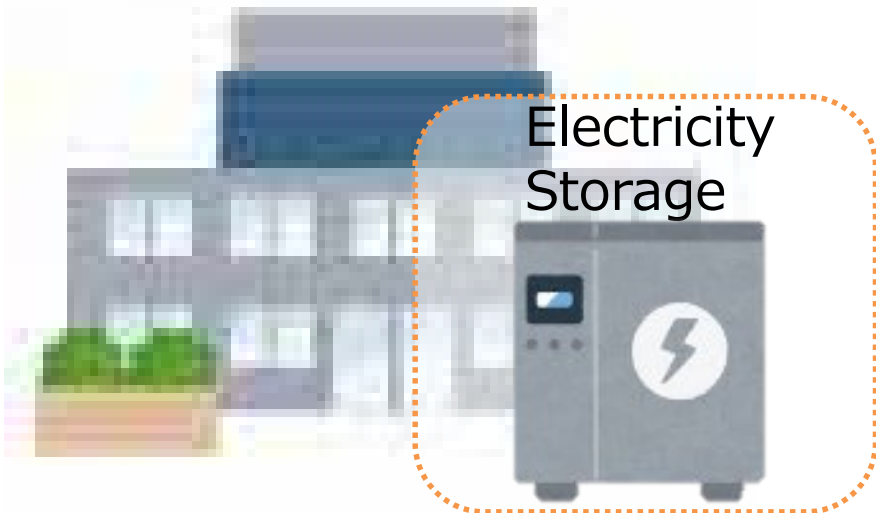
- ① ZEH (Net-Zero Energy House)
- ② EV
- ③ Energy-Saving Devices, etc.



Installing High-Capacity Batteries in Disaster Management Sites Such as Ward Offices, etc.

During Disasters

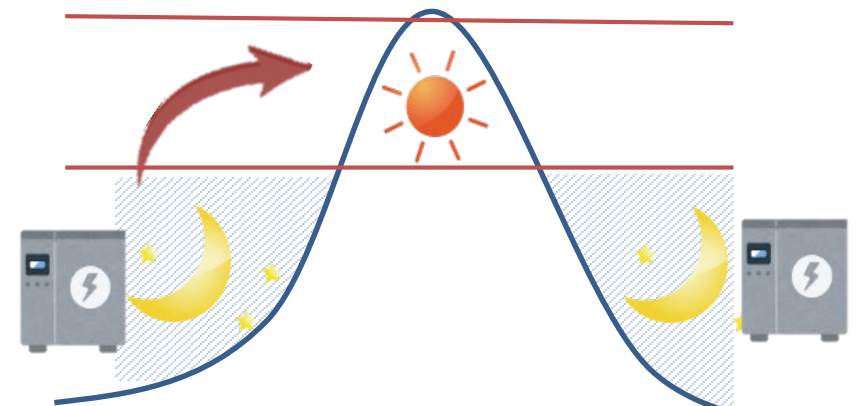
Electric Power Provision to Disaster Management Sites



Usual Operation

Efficient Use of Waste-to-Energy

Peak Shaving



Expand Waste-to-Energy Provision System to Evacuation Shelters Using EVs

Waste-to-Energy



EV Charging Stations



NISSAN



Electric Vehicles

Evacuation Shelters



Electricity That Won't Be Cut Off in Disaster Situations



Provide About 2 Days Worth of Electricity



SDGs Future City

Kumamoto City Was Selected As an
SDGs Future City for These Efforts

Economy

Society

**Activate the Regional
Economy**

**Mobilize the Regional
Community**

**Lifeline Resilience
Project**

Environment

**Reduce Greenhouse Gases &
Strengthen Disaster Response**



Began Working Together in Tandem with the Surrounding 17 Municipal Governments to Implement Policy to Counter Climate Change

**Partnership Between 18 Municipalities in the Kumamoto Metropolitan Area
In 2020, Declared to Achieve Zero Carbon Emissions by 2050
In 2021, Formed Japan's First Metropolitan Climate Change Countermeasure
Implementation Plan**



Commemoration of the Policy Plan Organized by the 18 Partner Municipalities





Thank You
for Your Attention!

