

# Kumamoto Presentation

## November 2013



**Bangkok Metropolitan Administration**

**Bangkok Initiatives for Livable City**

**Dr. Vallop Suwandee**

*The Chairman of Advisers to Governor of Bangkok*

*Former Deputy Governor of Bangkok*



**M.R. Sukhumbhand Baripatra**  
**The Governor of Bangkok**

**The Tasks to be Performed**  
**The Services to be Delivered**

**The Metropolitan Administration**























**6 Major Policies for  
the Development of Bangkok  
2013 - 17**







## **The Metropolitan of Safety**

- Installing additional 27,000 CCTV
- Installing solar lighting along pathways of all major canals
- Implementing additional pilot projects on “Drug – Free – Community”
- Establishing “Center Crisis and Emergency Management”



## **The Metropolitan of Safety**

- Improving efficiency on fire fighting on high rise building
- Installing solar lighting along pathways of all major canals
- Organizing community volunteers for every community





## **The Metropolitan of Happiness**

- Constructing five lines of monorails and lightrails
- Constructing additional underpasses to alleviate traffic congestion
- Providing more boat services on major canals



## **The Metropolitan of Happiness**

- Constructing thirty bicycle lanes
- Constructing Park and Ride at all corners of the City
- Installing BMA Live Traffic Application
- Providing more connectivity to mass transit system





## **The Metropolitan of Clean and Green**

- Green areas would be increased by 2,000 acres
- 10 large public parks would be established
- 4 dog parks at all four corners of the City would be established
- Incentives for constructions of Green Roof would be provided



## **The Metropolitan of Life Long Education**

- Providing free breakfast in addition to free lunch provided
- Promoting non-formal education
- Installing 5,000 locations of free Hi-Speed Wi-Fi of 4 MB
- Arranging more special education schools
- Preparing students for ASEAN Economic Community





## **The Metropolitan of Opportunities**

- Installing “i-Bangkok” for civic participation on providing suggestion and monitoring administration of the City
- Establishing “Young Designer Market”
- Developing various skills on the citizens
- Developing potentials on attaining better ways of live earning



## **The Metropolitan of ASEAN Hub**

- Establishing Center on Cultural and Art Exchange
- Establishing “BMA SME ASEAN Data Bank”
- Developing hospitals to attain international medical standards
- Developing educational institutions to attain international educational standards

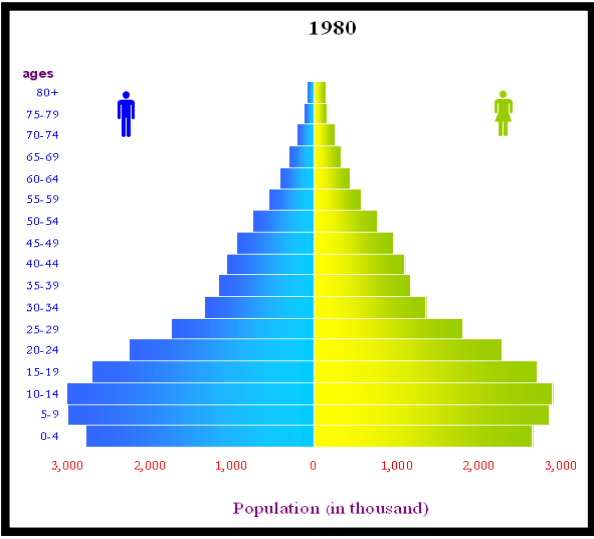
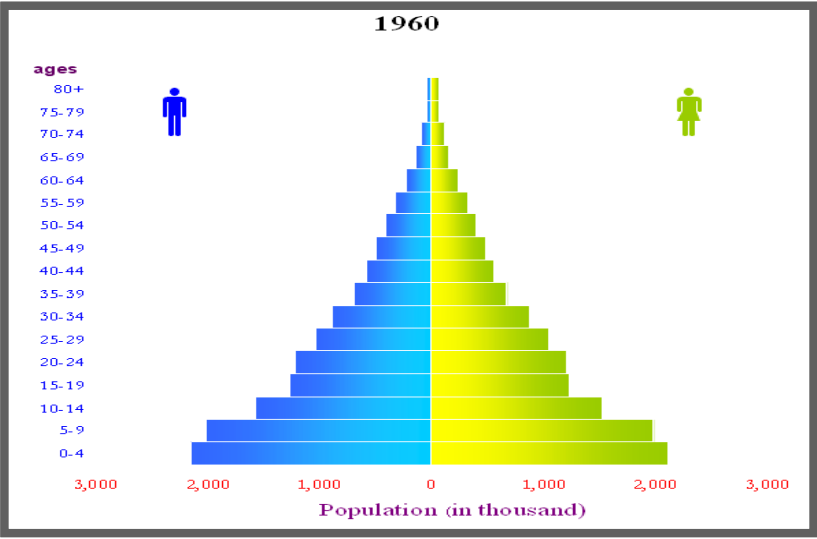


# Quality of Life

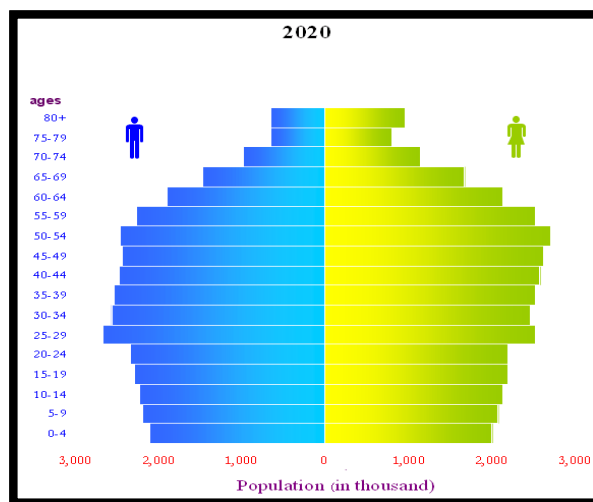
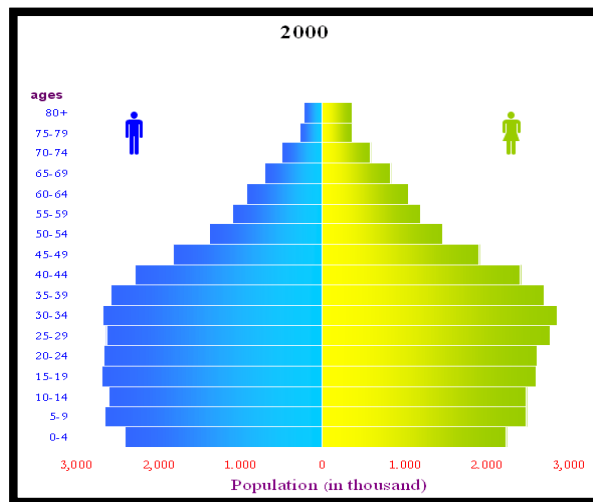
2009 - 2020

**The Lumpini Park**  
the first public park of Bangkok









## Elderly Population in Bangkok

Population	2011	2012	2013
Population in Bangkok	5,518,156	5,510,361	5,604,887
Elderly population	728,695 (13.21%)	765,974 (14.01%)	815,381 (14.52%)
60-69 years	418,677 (7.59%)	443,253 (8.04%)	464,954 (8.28%)
70-79 years	222,636 (4.03%)	231,672 (4.20%)	243,662 (4.34%)
80 years or above	87,478 (1.59%)	97,336 (1.77%)	106,765 (1.90%)

31

**We are approaching  
*Aging Society***







# Livable City for Elderly



# Livable City for Elderly



# **Bangkok Initiative for Livable City Development**



## **Bangkok Initiative for Livable City Development**

***Hospital for Elderly***

***Home Health Cares***

***Transportation for Elderly***





# *Medical Services for Elderly*

## Number of Beds for In - Patients

**Public Hospitals**      **13,386**    **beds**

**Private Hospitals**    **15,646**    **beds**

*No wards specifically assigned for Geriatric*



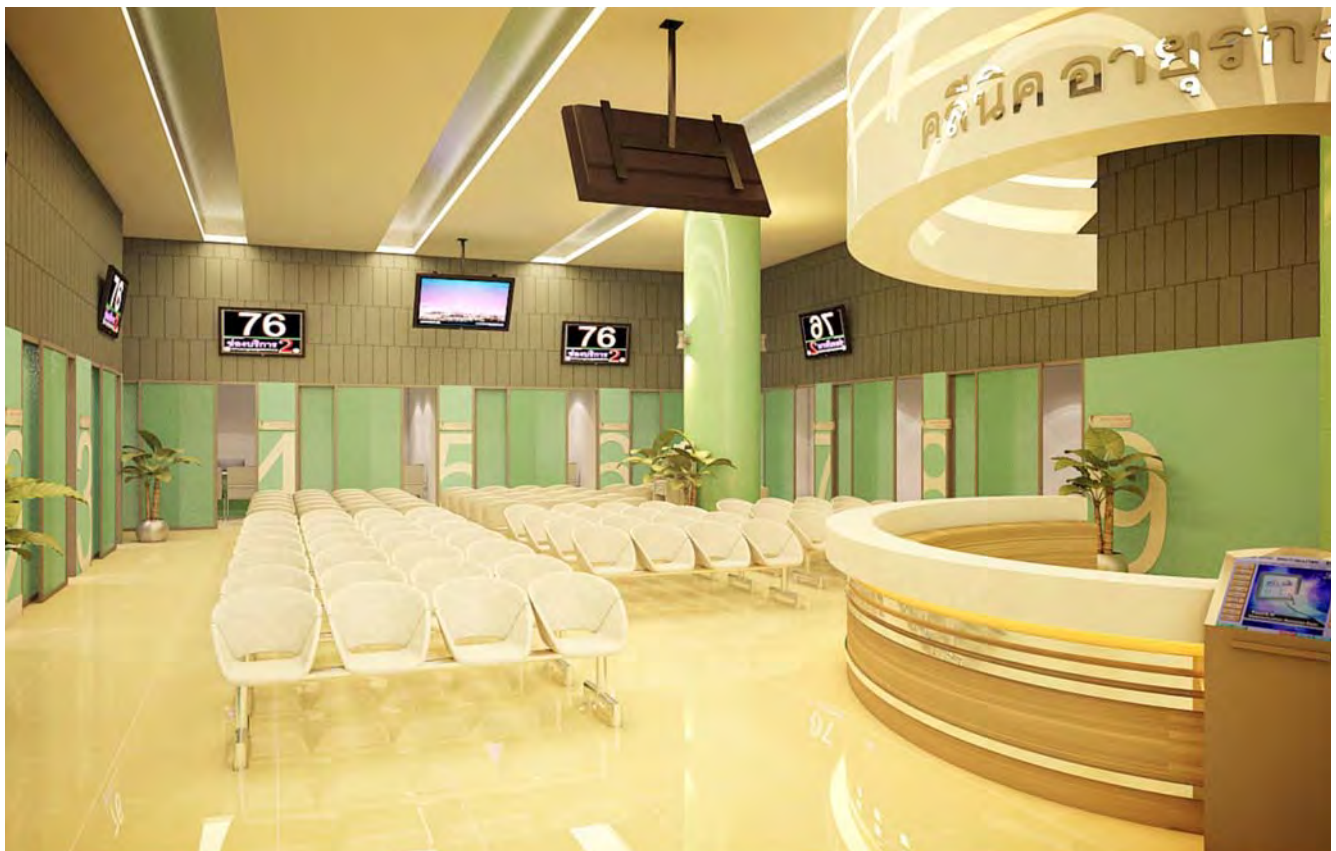
**Bang Khun Thein Area**





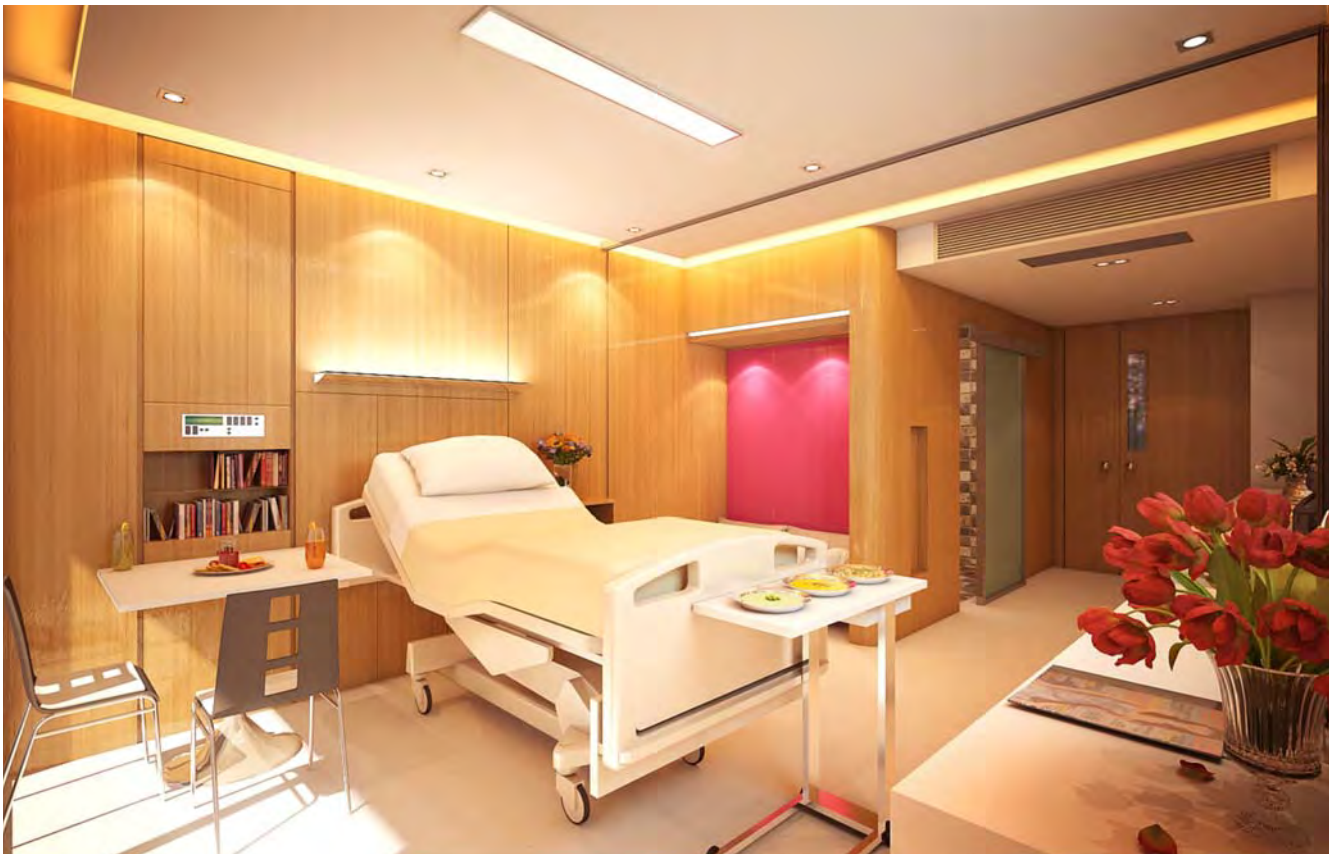


**Bangkok Geriatric Hospital at Bang Khun Thien**









## **Bangkok Geriatric Hospital at Bang Khun Tien**

***Number of Beds for In-Patients***

***300***

***Services Providing***

***health promotion  
health prevention  
medical treatment  
rehabilitation  
long term care***





## **Bangkok Geriatric Hospital at Bang Khun Tien**

### ***Specialized Medical Services Providing***

*hypertension*

*diabetic mellitus*

*ischemic heart diseases*

*stroke*

*depressive disorder*

*respiratory system diseases*

*rheumatoid*

*Alzheimer's diseases*

*Parkinson's diseases*



## **Bangkok Geriatric Hospital at Bang Khun Tien**

***Approximate Total Cost*** ***101 millions US\$***

***Periods of Budget Allocation*** ***4 years***

***Ratio to the total annual budget*** ***1.15***

***Ratio to the total annual budget on investment*** ***3.5***

### ***Financial Schemes***

***budget appropriation*** ***47 millions U.S.\$***

***charity lotteries*** ***33 millions U.S.\$***

***public donation*** ***21 millions U.S.\$***



# Bangkok Initiative for Livable City Development

*Hospital for Elderly*  
*Home Health Cares*  
*Transportation for Elderly*



*Home Visit for Elderly*





## *Home Visit for Elderly*

provided by teams of 204 medical doctors and  
1,024 nurses of 68 Centers of Public Health Services  
of the City of Bangkok

### missions

*: providing home health cares for illness  
predominantly found upon elderly*

*: taking cares of elderly with curable illness,  
long term chronic, long term disabilities*



## *Home Visit for Elderly*

### missions

*: providing rehabilitation*

*: providing training to care givers*

*: providing health prevention*



## *Home Visit for Elderly*

*- missions are supported by **BMA EPI NET***

*: family folders of **every** household in Bangkok  
have been established*

*: the folders are updated upon each visit*

*: the City is equipped with real time information  
on incidents of illness and epidemic  
supplied with information of exact home address*



## **Bangkok Initiative for Livable City Development**

*Hospital for Elderly*

*Home Health Cares*

*Transportation for Elderly*





## *Transportation for Elderly*



*Invested by the  
City of Bangkok  
Initially 100 vans  
are available  
Service could be  
requested upon  
phone call*



## **Bangkok Initiative for Livable City Development**



**Bangkok Initiative  
for  
Livable City  
Development**



***Thank You  
for Your Kind Attention***

